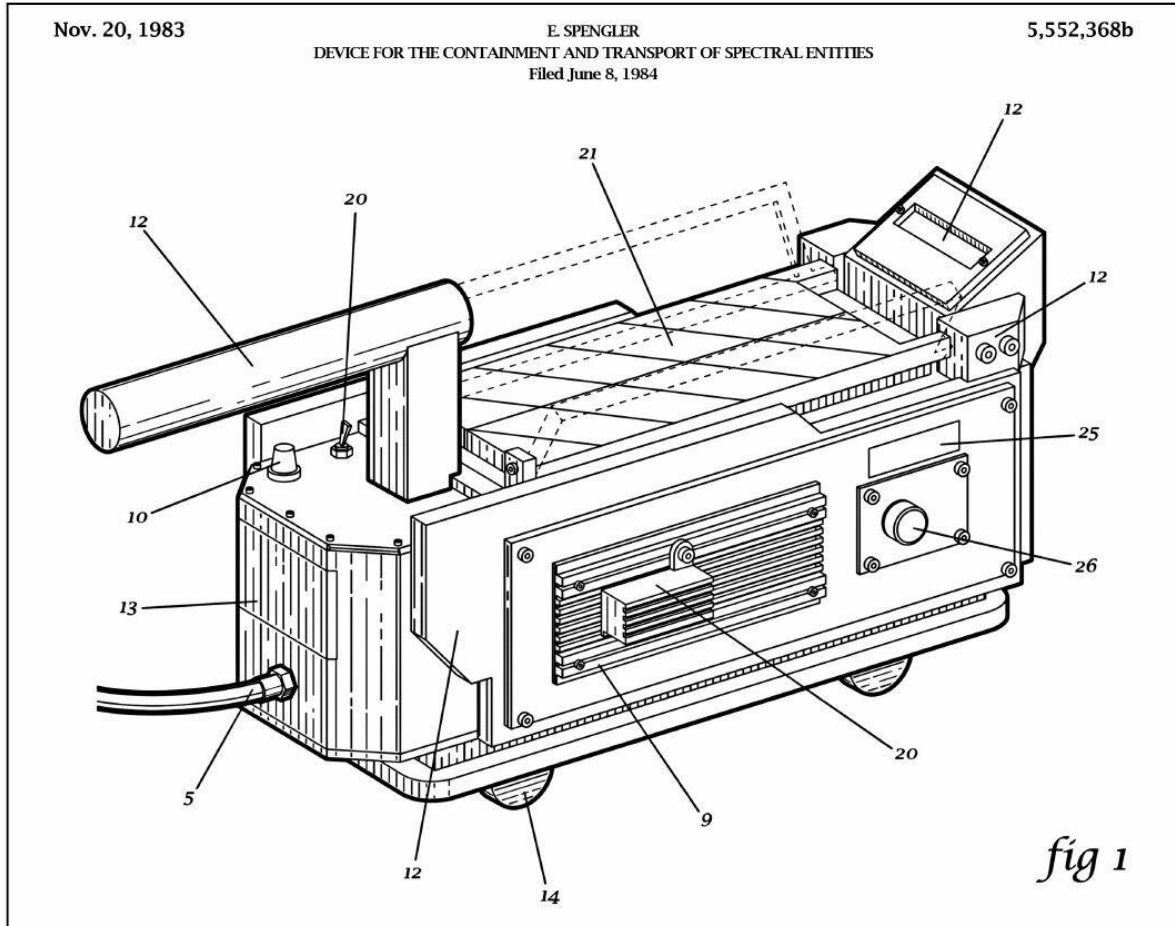


Wasteland Industries Ghost Trap Fogger

Instruction Manual



Version 1.2



Dear customer,

Thank you very much for purchasing a Haslab Two in a box Ghost Trap Fogger kit from Wasteland Industries. In this manual you will find a short instruction for setting-up and using the Wasteland Industries mini smoke machines. **Follow each step carefully- failure to do so can damage the product and cause frustration!**

Haslab Two in a box Ghost Trap Fogger.....	3
Battery information:	3
Setting up the kit:.....	4
Filling the clearomizer:.....	5
Installing the optional Foot Pedal Remote	6
Tips on using the smoke machine	9
Storage and maintenance	10
Solving issues	11
Safety	12
Support and FAQs	13
Manual Disclaimer	14
Disclaimer of Liability:.....	14

Haslab Two in a box Ghost Trap Fogger

Your package will include the following:

1. Fogger Main Unit
2. Clearomizer
3. 30ml Smoke fluid
4. Remote controller for the foot pedal (if ordered)

Battery information:

Due to shipping restrictions a battery is not included in the machine so these need to be purchased locally. **Before purchasing a battery, please read the following information carefully!**

Both unprotected and protected **16340 / RCR123 3,7V** batteries work, although of course we strongly recommend the protected battery. When searching for batteries do **NOT** buy CR123A **3V** batteries as these will not provide sufficient power to run the machine. CR123A batteries have a lower voltage (3V) and 16340/RCR123A batteries have a higher voltage (3.7V)

Please be aware of buying your batteries at Chinese websites or Ebay, there are quite a few fake batteries mentioning large amounts of mAh. Anything above 850 mAh can be considered fake.

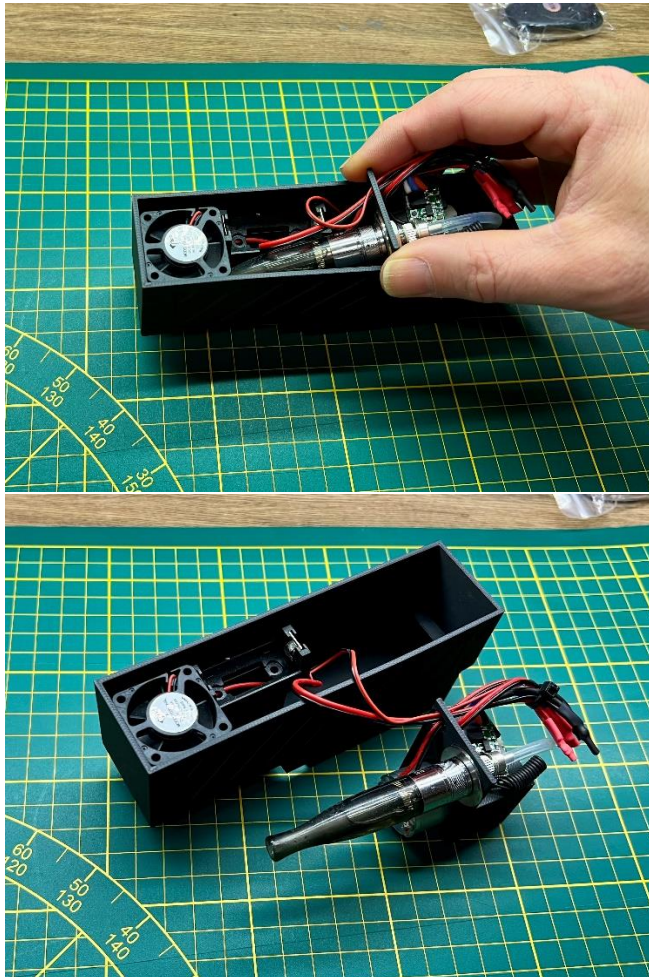
There are also options available of batteries with a build in USB C that can be recharges however these are also not recommended due to a low power output (and the larger size).

A few suggested batteries / brands are:

- Nitecore Li-Ion Akku 16340, 950mAh - NL169
- KeepPower 16340 850mAh Protected Li-ion Rechargeable Battery
- Trustfire TF16340 (RCR123)

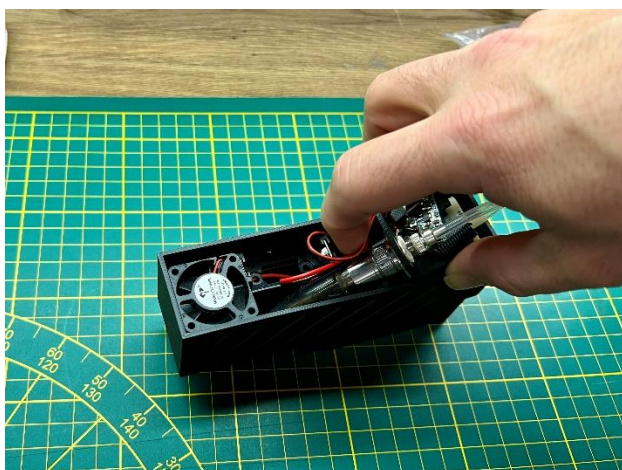
Setting up the kit:

- From the main unit the electronics can be lifted out carefully as per pictures below.
Please note the battery compartment and fan are glued to the main body so do not pull the wires as this may damage the machine!!



- Fill the clearomizer with the provided liquid (instructions below) and screw the clearomizer in the main unit.
For a detailed video on filling the clearomizer please go to our YouTube channel at [Youtube.com/WastelandIndustries](https://www.youtube.com/WastelandIndustries) and search for the video titled "Filling the T3 clearomizer"
- Put in your 16340 / RC123 rechargeable battery (make sure to put in the battery correct as it has a + and a – side!!) and slide the 3D printed main unit in your Ghost trap.

Make sure to put the end of the nozzle underneath the fan as per picture below:



Filling the clearomizer:

1. Unscrew the silver bottom ring from the clearomizer.
2. Fill with e-liquid – Note: Do not fill more than 95% of its capacity.
3. **Never fill the e-liquid into the center hole, please drip against the wall.**
4. Screw the silver ring back.
5. **Let it soak for 10 to 15 minutes prior to use.**
6. For the first time use or after not using the machine for a while it sometimes is needed to take a puff from the clearomizer as if you are smoking a cigarette (without inhaling the smoke) to get the smoke flowing (again). This only needs to be done if you turn on the machine and no smoke is coming out.

Simply screw the clearomizer to the top of the smoke machine base unit (**do not overtighten**) and insert your 18650 battery in the battery holder or connect the USB cable to you power source.

Once this is done Test the machine by pressing the A or B button on the remote keyfob. The machine should now instantly produce smoke and the fan should turn.

For more info, trouble shooting and FAQ's please refer to the end of this manual.

We hope you enjoy the smoke machine and we love to see some pictures /movies of our smoke machine in action.

Installing the optional Foot Pedal Remote

Installing the foot pedal remote takes about 15 minutes. All you need is a Phillips screwdriver.

First step is to put in 2 CR 2032 batteries in the battery holder as per picture (one facing up, one facing down). Once done switch the on / off switch on the battery to the ON position:



Now quickly test the remote by pressing the yellow button. A small blue light should come on on the small PCB board. Once the blue light is on press the yellow button again to turn it off.

Opening the foot pedal

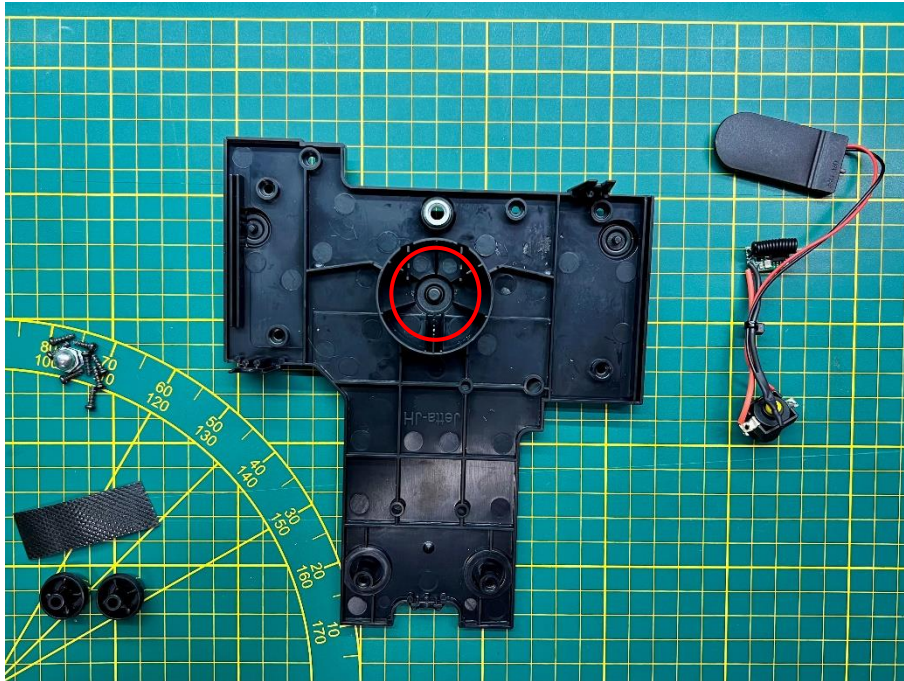
Begin by carefully twist and pulling out the 2 black bottom feet as per picture. Use the added rubber strip to get a better grip and twist and pull the 2 black feet out.



Once the two feet have been removed unscrew the 8 screws as per picture below.

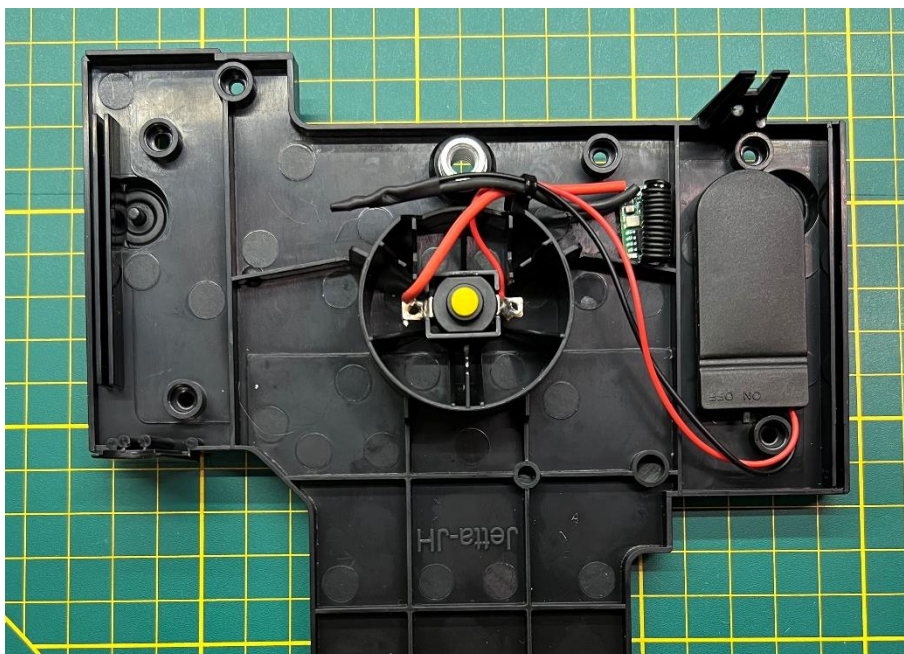


Now push the silver stud upwards opening the pedal from the bottom. The bottom plate will now be used to install the remote. The yellow button will be placed in the circle as per picture below (push it down well).



Once this is in place remove the double sided tape from the remote and from the battery holder and tape them as per picture below on the bottom plate.

If you bought the remote together with the fogger you are done now and can close the trap.



IMPORTANT NOTE!! Before closing the trap make sure the switch on the battery holder is on the ON position

Tips on using the smoke machine

- Please do not continuously run the smoke machine but only in small bursts of max 40-50 seconds to allow cool down.
- After each use, we recommend ejecting any excess fog liquid that may have recondensed within the barrel of the Wasteland Industries Smoke Machine. This can be done by simply “flicking” the Wasteland Industries Smoke Machine while holding it to eject any excess liquid from the barrel.
- The vape tank (or clearomizer) can very easily switched to a new one if for any reason the old tank will break.
- If, during normal use, you notice that the smoke produced starts smelling burnt, it's time to replace your clearomizer (normally after 2-3 months of heavy use). We suggest to buy a Kanger T3 Clearomizer.
- You can find the liquid in any vape shop near you, just ask for "100% glycerin" or has they call "liquid base" - it's cheap and does not include any of the bad chemicals (like nicotine) and therefore safe to use. If possible ask for 30PG/70VG ratio at any vape shop. In general the higher the VG rate the more smoke.
- This smoke machine can be very easy be built in your project. Also the use of this adapter makes this smoke machine a lot less fragile as other smoke machines currently on Etsy. Please however note this item is still somewhat fragile and its goal is to be used in prop, costume making, theater and similar stuff that requires building, therefore we do not accept returns if you break it.
- **The fogger runs off of a 3.7-volt battery and any modifications to the power supply will damage the unit.**

Storage and maintenance

- Do not store the Wasteland Industries Smoke Machine for extended periods of time (more than a few days) with fog liquid still in the fluid tank.
- When the fogger is not in use for a long time remove the battery to avoid discharging.
- When storing for a longer period place the machine in a cool, dry place.
Also it is advised before storing to unscrew the clearomizer and give it a quick rinse to remove any remaining fog liquid. To do so:

Open the clearomizer and pour out the remaining smoke fluid in the clearomizer.

Take apart the clearomizer (it's 3 pieces):

1. The plastic top tube
2. The silver Bottom ring
3. In the silver bottom ring there is a small pipe (which is the coil). You can also screw this loose from the silver ring.

Once you have all parts apart you can rinse everything with hot water and let it completely dry. Once dry re-assemble the clearomizer and store it separate from the machine.

Solving issues

Issue: Machine produces a burning smell with a NEW heating coil

There may be a very slight burning smell present in the first few second of operation with a new coil, this is normal. If the smell does disappear or gets more severe, stop using the Wasteland Industries Smoke Machine and allow it to rest for at least another 30 minutes before continuing. Ensure that the fluid tank is fully filled. In cold environments, the fog liquid becomes more viscous and will take longer to absorb into the heating coil. If this is the case, place the Wasteland Industries Smoke Machine in a warm area before using it.

Issue: Machine is running but no smoke is coming out of the machine

For the first time use or after not using the machine for a while it sometimes is needed to take a puff from the clearomizer as if you are smoking a cigarette (without inhaling the smoke) to get the smoke flowing (again). This only needs to be done if you turn on the machine and no smoke is coming out.

If this does not solve the issue most likely the clearomizer was either filled incorrect resulting in the middle tube being blocked with fluid or the clearomizer is damaged and needs to be replaced by a new one.

You can try to clean the clearomizer using following steps:

Unscrew the clearomizer from the machine and poor out the smoke fluid in the clearomizer.
Take apart the clearomizer (it's 3 pieces):

1. The plastic top tube
2. The silver Bottom ring
3. In the silver bottom ring there is a small pipe (which is the coil). You can also screw this loose from the silver ring.

Once you have all parts apart you can rinse everything with hot water and let it completely dry.
After that you can re-assemble all.

Fill the clearomizer again and let it stand for at least 15 minutes!

Safety

The Wasteland Industries Smoke Machine produces fog by evaporating a mixture of Propylene Glycol and Vegetable Glycerin. While these substances are generally recognized as safe and are commonly found in food additives and skincare products, it is essential to follow these safety guidelines:

General Safety

- Never operate the Smoke Machine with an empty liquid tank.
- Do not consume the fog liquid.
- Avoid contact between the fog liquid and your eyes.
- Do not use the Smoke Machine near children under 8 years old or pregnant individuals.
- Do not operate the Smoke Machine near people with renal health issues.
- Do not deliberately inhale the smoke it produces.
- If you feel nauseous, light-headed, or experience any other adverse effects, stop using the device immediately and move to a well-ventilated area with fresh air. Seek medical attention if symptoms persist or if you have concerns about exposure to the chemicals.

Heat & Operation Safety:

- During use, the Smoke Machine heats an internal coil. To avoid heat-related hazards, follow these guidelines:
- Do not touch the clearomizer during operation, as it becomes hot.
- Allow the clearomizer to fully cool before refilling the liquid.
- Do not aim the Smoke Machine at people or animals within 1 meter, as small droplets of hot fog fluid may occasionally exit the nozzle.
- Never look directly into the nozzle while the device is operating.
- Keep the Smoke Machine away from all flammable materials.
- Ensure adequate space and ventilation around the device at all times.
- Do not modify or alter any of the Smoke Machine's power settings.
- Use only approved batteries or power banks suitable for your state or country.
- Do not allow anyone under the age of 18 to operate the Smoke Machine.

Support and FAQs

Can the Wasteland Industries Smoke Machine trigger smoke alarms?

Yes, if enough smoke is produced then ionization and photoelectric smoke alarms will be activated. Traditional heat-activated smoke alarms and sprinklers won't be affected

Is it possible to change the smoke color?

Unfortunately not. The Wasteland Industries Smoke Machine produces smoke through the evaporation of a fog liquid so it can only be white, adding a dye to the liquid will not change this. The only way to simulate colored smoke using the Wasteland Industries Smoke Machine would be to light up the white smoke using some external lights.

Can I breathe in the smoke?

During proper operation, the fog produced is considered to be non-toxic but we do not recommend breathing it in anyway. The smoke can only become toxic if the safety precautions regarding the replacement of worn-out heating coils are not followed.

What is the fog liquid made out of?

Our fog liquid consists of a high purity vegetable glycerin and propylene glycol mixture. These chemicals are commonly-available chemical and may be found in local vape shops as a base liquids for electronic cigarettes.

Can I use liquids from other smoke machines?

We can only guarantee the safety and performance of the fog liquid that we sell so if you decide to experiment with other compositions, this would be at your own risk.

What obstacles can the remote control signal go through?

It really depends on the exact situation but in general, as a rough guideline, you will be able to control the Wasteland Industries Smoke Machine through several thin plaster walls. Similarly, if you decide to put it into cardboard or fabric enclosure, you shouldn't encounter any issues. On the other hand, metal barrier such as car doors will usually block the signal although we have even had luck with activating the Wasteland Industries Smoke Machine while it was inside a car hood!

If you believe that your Wasteland Industries Smoke Machine is faulty, please check the troubleshooting section of this manual. If your problem still persists, please reach out to us at the email address below.

Any other mail functions you can send us an email: **info@wasteland-industries.com**

Manual Disclaimer

This User Manual—including all illustrations, text, specifications, and data—is based on the most current information available at the time of publication. Every effort has been made to ensure accuracy in its creation and verification.

As Wasteland Industries continually strives to provide updated and state-of-the-art products, technical modifications or improvements may be made over time. As a result, the information in this User Manual may change without notice.

Wasteland Industries has taken care to ensure the accuracy of the information provided, but assumes no responsibility for actions taken based on the contents of this manual, nor for any errors, omissions, misinterpretations, or resulting damages—direct or consequential—arising from the use or reliance on this manual or the products referenced within it.

If you notice that certain technical features or the appearance of your product differ from what is described in this manual, please contact Wasteland Industries.

Disclaimer of Liability:

Wasteland Industries disclaims all responsibility and liability for any property damage, personal injury, or other harm arising from or related to the use, misuse, or improper operation of the Wasteland Industries Smoke Machine. By operating this device, the user acknowledges, understands, and accepts all risks described in the accompanying safety guidelines and instruction manual.

It is the sole responsibility of the user to ensure that the Smoke Machine is operated in a safe, lawful, and appropriate manner, and to exercise sound judgment with regard to all safety precautions. Wasteland Industries makes no warranties, express or implied, regarding the safety or suitability of the device when used contrary to the instructions provided.

Individuals who are unwilling or unable to accept the risks associated with the operation of this device are advised to discontinue use immediately and return the product to Wasteland Industries for a full refund, subject to applicable return policies.

Again thank you for purchasing a Wasteland Industries kit and please do send us a picture of your project or tag us in your social media post!

Visit us @

www.wasteland-industries.com

www.etsy.com/shop/wastelandindustries

www.facebook.com/wastelandindustries

www.instagram.com/wastelandindustries

www.youtube.com/wastelandindustries

