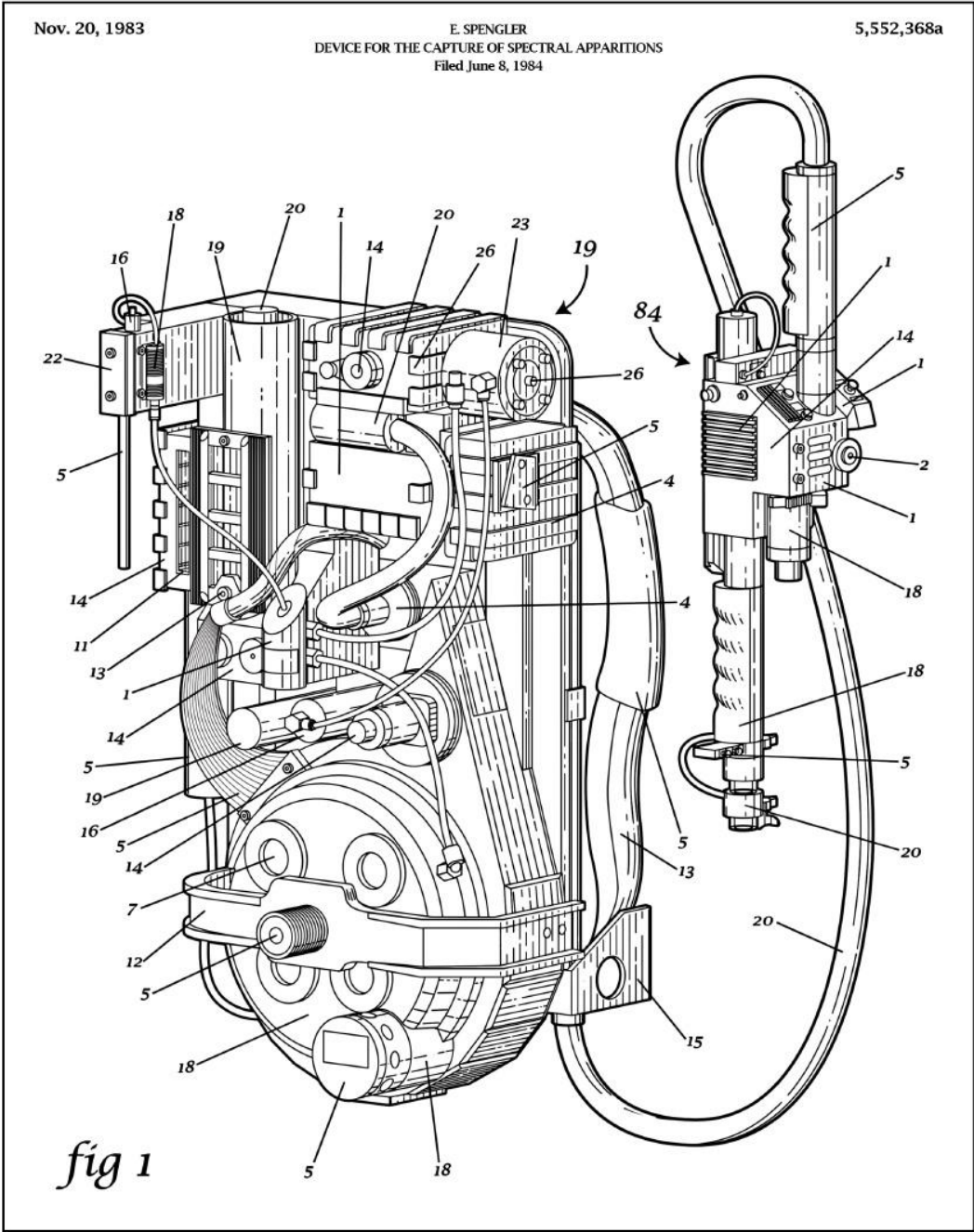


Wasteland Industries Vent-kit Instruction Manual





WASTELAND INDUSTRIES

Dear customer,

Thank you very much for purchasing a Vent kit -smoke machine from Wasteland Industries. In this manual you will find a short instruction for setting-up and using the Wasteland Industries mini smoke machines. **Follow each step carefully- failure to do so can damage the product and cause frustration!**

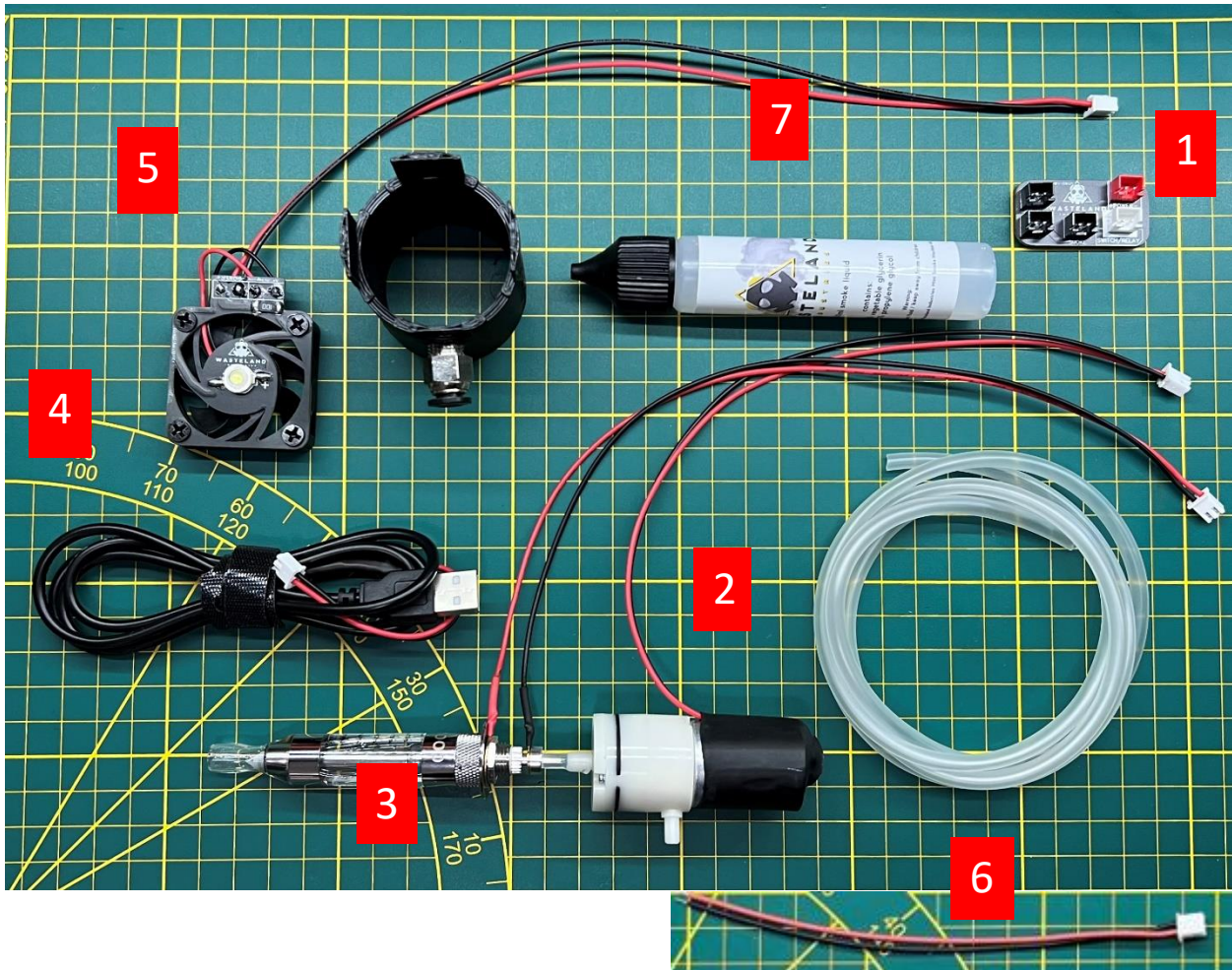
Please refer to the correct page for your particular smoke machine:

Ghostbusters Proton pack vent-kit	3
Connecting the Vent-kit to sound and light boards:	6
Ninja Tunes (sets sold before May 2023)	6
Ninja Tunes (sets sold after May 2023).....	7
Frankengeek	9
GBFans / Ghostlabs42	11
Haslab Proton Pack / GPStar compatible Ghostbusters Proton pack vent-kit	12
Connecting the Vent-kit to sound and light boards:	15
Ninja Tunes (sets sold before May 2023)	15
Ninja Tunes (sets sold after May 2023).....	16
GBFans / Ghostlabs42 Keep Alive mod	18
GPStar Sound and Lightkit	19
Tips on using the smoke machine	23
Storage and maintenance	24
Solving issues	25
Safety	27
Support and FAQs	29
Manual Disclaimer	30

Ghostbusters Proton pack vent-kit

Your package will include the following:

1. Connection PCB Board
2. Air pump
3. Clearomizer + connector
4. USB Power cable
5. Fan + LED
6. Input cables for sound and light kit relay
7. 30ml Smoke fluid



Setting up the kit:

Take the PCB Board and connect the following items:



Picture is the "standard" PCB. For the Ninja Tunes kit the PCB is a little different. Please see chapter "Connecting Vent-kit to sound and lightboards" for more info

- 2** Air pump -> to connector marked as **PUMP**
- 3** Clearomizer + connector -> to connector marked as **SMOKE**
- 4** 18650 battery holder or USB cable -> to connector marked as **+POWER-**
- 5** Fan + LED -> to connector marked as **LED**
- 6** Input cables for sound and light kit relay -> to connector marked as **SWITCH / RELAY**

First time use

Filling the clearomizer:

1. Unscrew the silver bottom ring from the clearomizer.
2. Fill with e-liquid – Note: Do not fill more than 95% of its capacity.
3. **Never fill the e-liquid into the center hole, please drip against the wall.**
4. Screw the silver ring back.
5. **Let it soak for 10 to 15 minutes prior to use.**
6. For the first time use or after not using the machine for a while it sometimes is needed to take a puff from the clearomizer as if you are smoking a cigarette (without inhaling the smoke) to get the smoke flowing (again). This only needs to be done if you turn on the machine and no smoke is coming out.

Simply screw the clearomizer to the top of the smoke machine base unit (**do not overtighten**) and insert your 18650 battery in the battery holder or connect the USB cable to you power source.

Once this is done Test the machine by making contact between the black and red output wires (number **6** in the picture above). The machine should now instantly produce smoke, the fan should turn and the white LED should light up.

For more info, trouble shooting and FAQ's please refer to pages 20 and beyond of this manual.

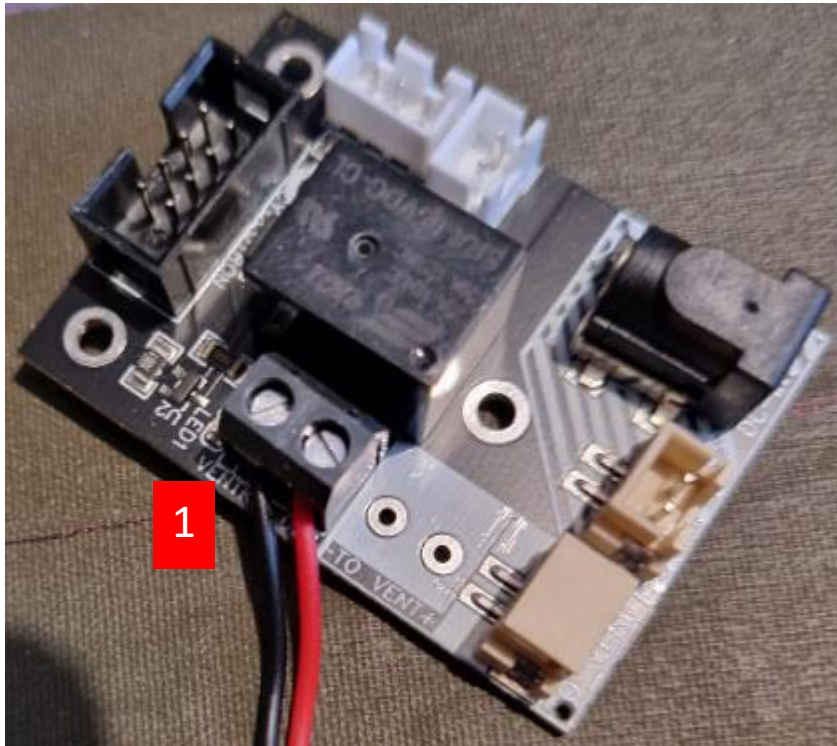
We hope you enjoy the smoke machine and we love to see some pictures /movies of our smoke machine in action.

Connecting the Vent-kit to sound and light boards:

The Ghostbusters Proton pack vent-kit is designed to be connected to a range of sound and lightboards. Connecting to some of the "main manufactures" will be discussed here:

Ninja Tunes (sets sold before May 2023)

For the Ninja Tunes set no additional vent relay boards are needed as these are included with the set.

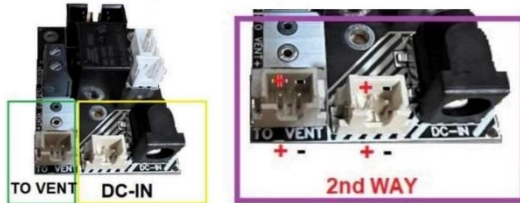


- Simply screw in the black and red cable coming from the Wasteland Industries PCB board marked SWITCH / RELAY to the Ninja Tunes Vent relay marked VENT **1**
- Connect the power source (18650 battery or USB cable) to the Wasteland Industries Vent kit
- Done

Note: The Wasteland Industries Vent kit is not powered from the sound and light kits relay and should therefore always be connected to its own power source.

Ninja Tunes (sets sold after May 2023)

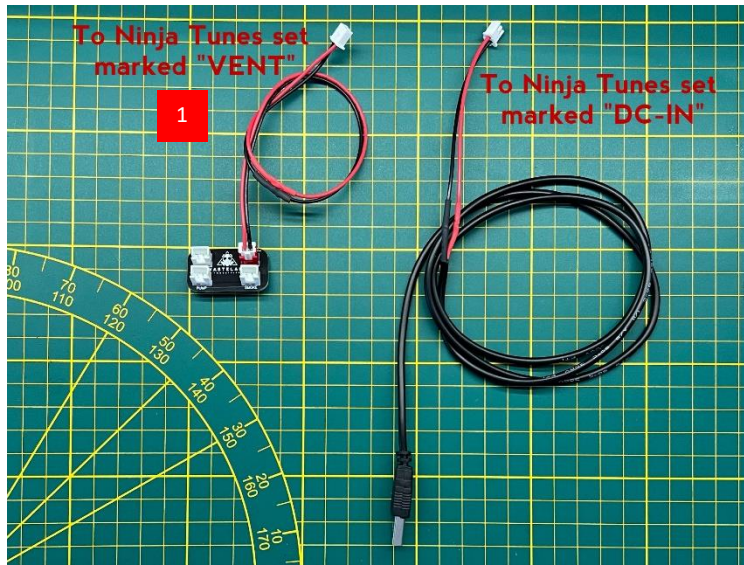
Ninja Tunes sets made after May 2023 have a new set-up. On this no screw invent relay is present but this was replaced by a JST connector. Also the power to the vent kit is now being done via the Ninja Tunes set.



In the following sketch illustrated a general connection diagram of the smoke unit.



- On the PCB connect the part marked POWER with the part marked VENT on the Ninja Tunes set using the provided cable
- Connect the USB cable provide with the machine to the connector next to the one marked VENT as per picture above. **1**
- Done



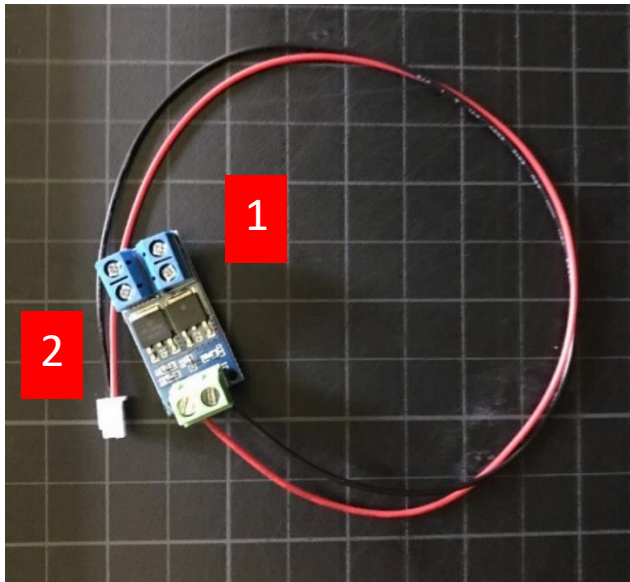
Note: The Wasteland Industries Vent kit is not powered from the sound and light kits relay and should therefore always be connected to its own power source.

Frankengeek

For Frankengeek kits there are now 2 options. Older boards for both 85% and 1-1 packs require an additional vent relay PCB (sold by Frankengeek online)

For the 1-1 packs Frankengeek introduced a new board which has the vent relay build in now. When in doubt please contact Frankengeek.

Installing on older boards with separate Vent Relay:



The Frankengeek Vent relay has 2 screw in connectors marked:

VIN - and + **1**
OUT - and + **2**

- Simply screw in the black and red cable coming from the Wasteland Industries PCB board marked SWITCH / RELAY to the Frankengeek Vent relay marked OUT - and + **2**
!! Black wire to OUT - and Red Wire to OUT +
- Connect the power source (18650 battery or USB cable) to the Wasteland Industries Vent kit
- Connect a 9V battery or power source to the Frankengeek Vent relay marked VIN - and + **1**
!! Black wire to OUT - and Red Wire to OUT +
- Done

Note: The Wasteland Industries Vent kit is not powered from the sound and light kits relay and should therefore always be connected to its own power source.

Also the Vent relay is not powered from the sound and light kits relay and should therefore always be connected to its own power source.

Installing on new boards with build in Vent Relay:

From the Frankengeek install manual

Vent Relay Connection (Optional) The cyclotron board features an electromechanical relay for the connection of an auxillary venting device (e.g. smoke kit, high power lamp, etc). The VENT terminals are normally open dry contacts. The contacts close during manual vent or overheat sequences. The VBAT terminals are directly connected to the battery connection on the cyclotron board. They facilitate easy wiring of a venting device.

CORRECT WAY: *If a venting device has its own power source, simply connect it to the vent terminals to emulate a switch.*

INCORRECT WAY: *To power a venting device from the VBAT terminals, wire it according to figure 3.*

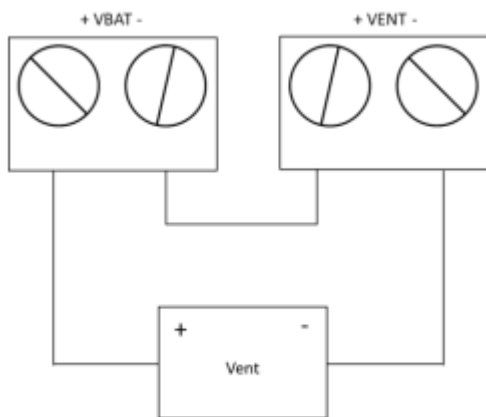


Figure 3 Vent Relay Wiring

Please do NOT use the VBAT option as per figure 3!! in this case the fogmachine will be powered by 12V and will burn the coil.

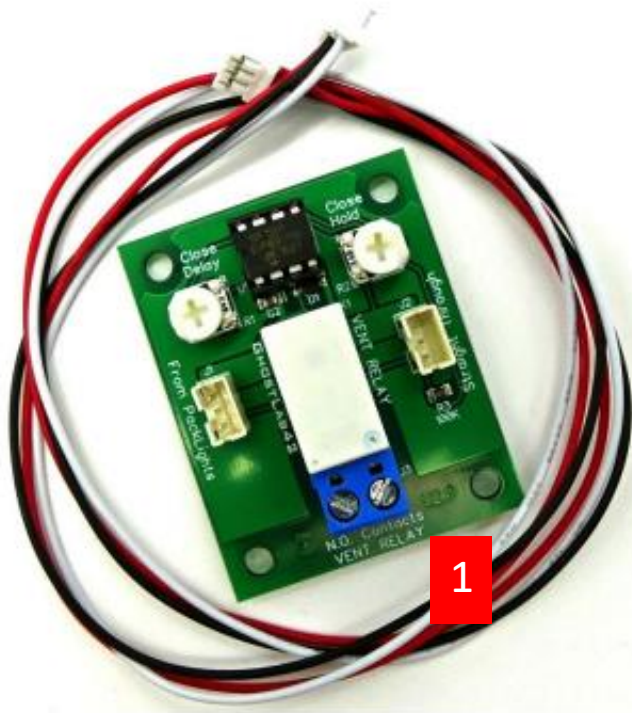
For correct install Simply screw in the black and red cable coming from the Wasteland Industries PCB board marked SWITCH / RELAY to the Frankengeek Vent relay marked + VENT -

!! Black wire to VENT - and Red Wire to VENT +

Power the Wasteland Industries machine by using the 5V USB cable supplied with the machine

GBFans / Ghostlabs42

For the GBFans / Ghostlabs42 set an additional vent relay PCB is needed (sold by GBFans / Ghostlabs42 online).



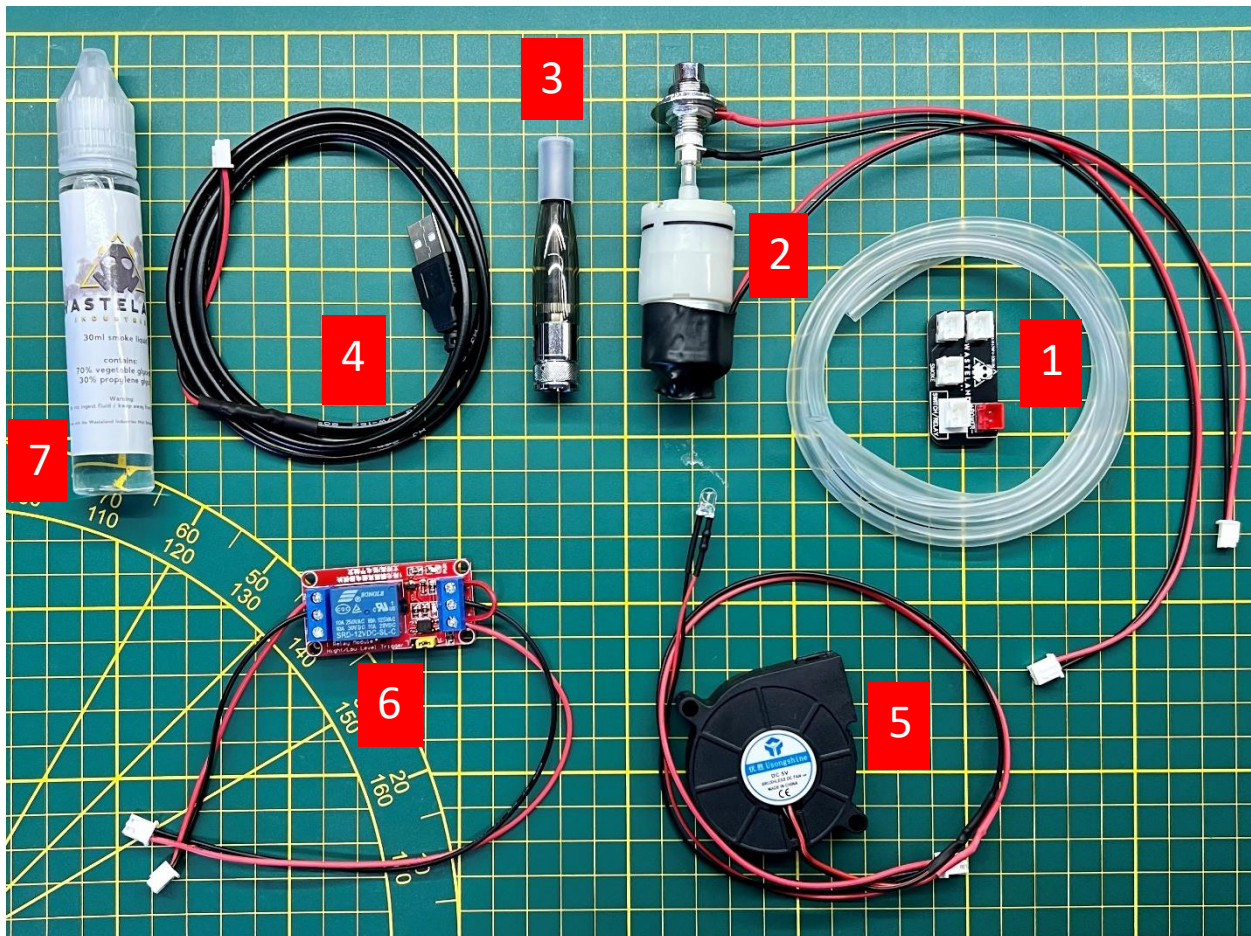
- Simply screw in the black and red cable coming from the Wasteland Industries PCB board marked SWITCH / RELAY to the Ninja Tunes Vent relay marked VENT **1**
- Connect the power source (18650 battery or USB cable) to the Wasteland Industries Vent kit
- Done

Note: The Wasteland Industries Vent kit is not powered from the sound and light kits relay and should therefore always be connected to its own power source.

Haslab Proton Pack / GPStar compatible Ghostbusters Proton pack vent-kit

Your package will include the following:

1. Connection PCB Board
2. Air pump
3. Clearomizer + connector
4. USB Power cable
5. Fan + LED
6. Input relay for sound and light kit
7. 30ml Smoke fluid



Setting up the kit:

Take the PCB Board and connect the following items:



Picture is the "standard" PCB. For the Ninja Tunes kit the PCB is a little different. Please see chapter "Connecting Vent-kit to sound and lightboards" for more info

- 2** Air pump -> to connector marked as **PUMP**
- 3** Clearomizer + connector -> to connector marked as **SMOKE**
- 4** 18650 battery holder or USB cable -> to connector marked as **+POWER-**
- 5** Fan + LED -> to connector marked as **LED**
- 6** Input relay for sound and light kit relay -> to connector marked as **SWITCH / RELAY**

First time use

Filling the clearomizer:

7. Unscrew the silver bottom ring from the clearomizer.
8. Fill with e-liquid – Note: Do not fill more than 95% of its capacity.
- 9. Never fill the e-liquid into the center hole, please drip against the wall.**
10. Screw the silver ring back.
- 11. Let it soak for 10 to 15 minutes prior to use.**
12. For the first time use or after not using the machine for a while it sometimes is needed to take a puff from the clearomizer as if you are smoking a cigarette (without inhaling the smoke) to get the smoke flowing (again). This only needs to be done if you turn on the machine and no smoke is coming out.

Simply screw the clearomizer to the top of the smoke machine base unit (**do not overtighten**) and insert your 18650 battery in the battery holder or connect the USB cable to you power source.

For more info, trouble shooting and FAQ's please refer to pages 20 and beyond of this manual.

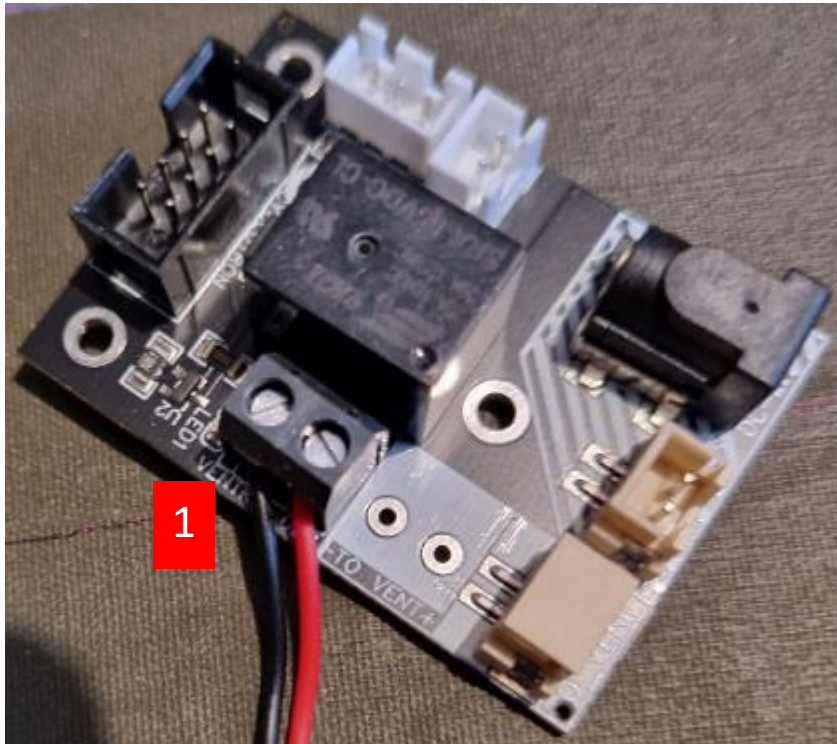
We hope you enjoy the smoke machine and we love to see some pictures /movies of our smoke machine in action.

Connecting the Vent-kit to sound and light boards:

The Ghostbusters Proton pack vent-kit is designed to be connected to a range of sound and lightboards. Connecting to some of the "main manufactures" will be discussed here:

Ninja Tunes (sets sold before May 2023)

For the Ninja Tunes set no additional vent relay boards are needed as these are included with the set.

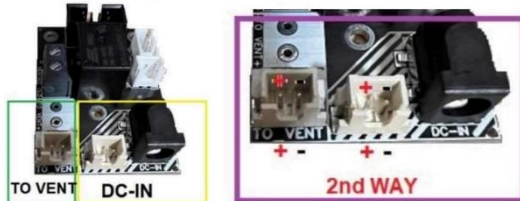


- Simply screw in the black and red cable coming from the Wasteland Industries PCB board marked SWITCH / RELAY to the Ninja Tunes Vent relay marked VENT **1**
- Connect the power source (18650 battery or USB cable) to the Wasteland Industries Vent kit
- Done

Note: The Wasteland Industries Vent kit is not powered from the sound and light kits relay and should therefore always be connected to its own power source.

Ninja Tunes (sets sold after May 2023)

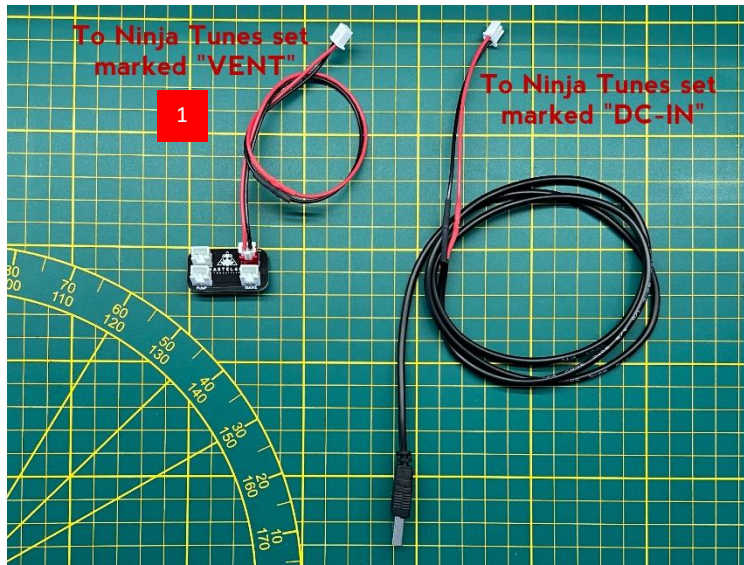
Ninja Tunes sets made after May 2023 have a new set-up. On this no screw invent relay is present but this was replaced by a JST connector. Also the power to the vent kit is now being done via the Ninja Tunes set.



In the following sketch illustrated a general connection diagram of the smoke unit.



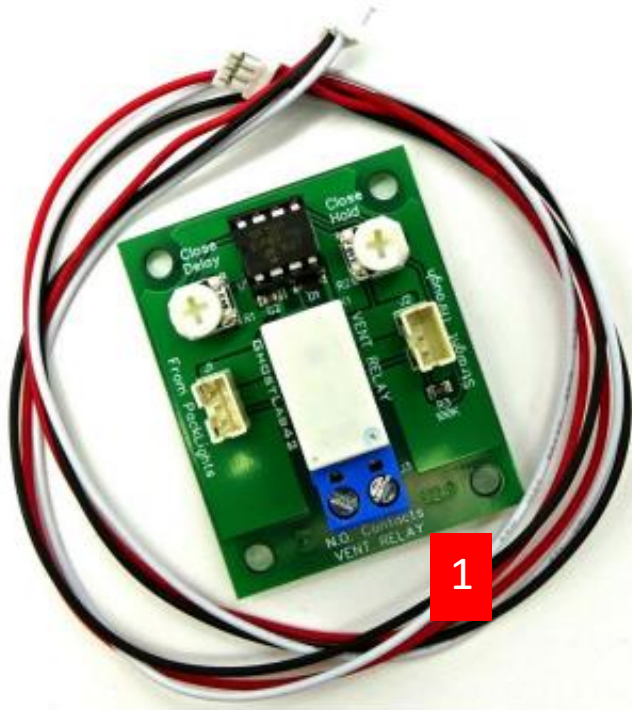
- On the PCB connect the part marked POWER with the part marked VENT on the Ninja Tunes set using the provided cable
- Connect the USB cable provide with the machine to the connector next to the one marked VENT as per picture above. **1**
- Done



Note: The Wasteland Industries Vent kit is not powered from the sound and light kits relay and should therefore always be connected to its own power source.

GBFans / Ghostlabs42 Keep Alive mod

For the GBFans / Ghostlabs42 set an additional vent relay PCB is needed (sold by GBFans / Ghostlabs42 online).

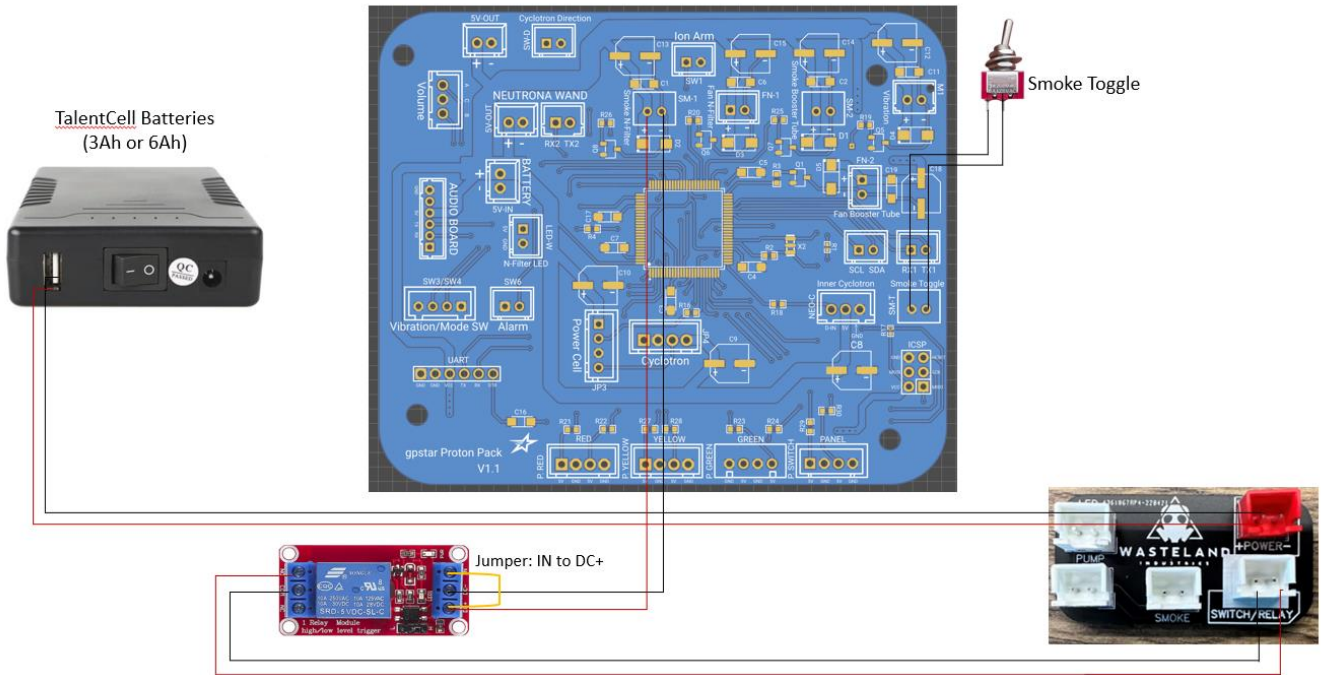


- Simply screw in the black and red cable coming from the Wasteland Industries PCB board marked SWITCH / RELAY to the Ninja Tunes Vent relay marked VENT **1**
- Connect the power source (18650 battery or USB cable) to the Wasteland Industries Vent kit
- Done

Note: The Wasteland Industries Vent kit is not powered from the sound and light kits relay and should therefore always be connected to its own power source.

GPStar Sound and Lightkit

The kit can be wired as per diagram below:



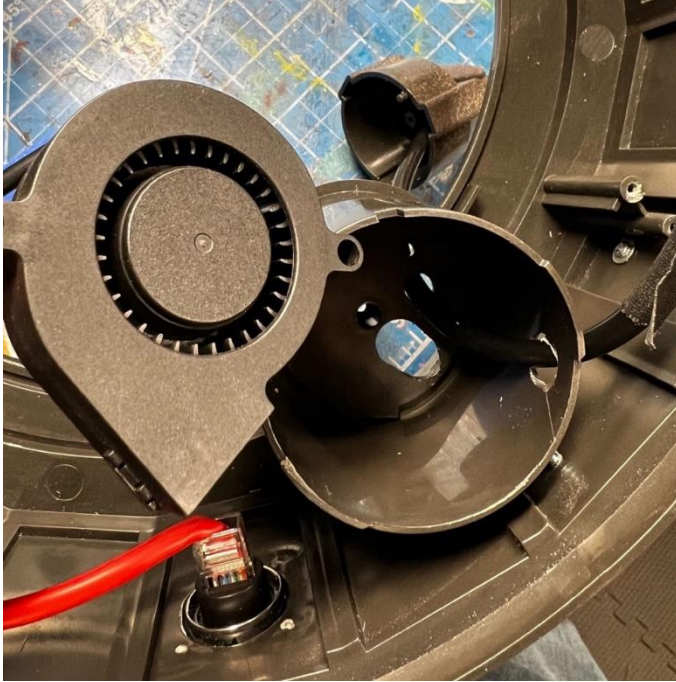
Installing the Nfilter 3d printed parts (info taken from GPStar Github files)

The following 3D parts are provided:

- [Blower Mount] - Holds the 50mm blower in an upright position
- [Filter Cone] - Replaces the stock cone and allows smoke and air to exit
- [Template] - Used to mark where to cut into the pack for smoke tubing and blower air hole



The template print will help identify the correct placement for holes which will allow the silicone tubing and LED power wires to pass through, as well as the port opening for the blower fan. Place this with the word TEMPLATE facing up for the proper orientation.



Once the holes are drilled you can simply insert the blower mount into the socket from below. There will be space to access the screw which holds the cone in place, as well as routing the silicone tubing and LED power wires. The blower will be held in place by the other half of the inner cyclotron housing once reassembled--this should be done last, after the cone has been fully installed and tested.



The LED and wires should be installed first, pushing the LED to the very tip of the cone. Once in place, the silicone tubing can be inserted 2-3cm (1/2") into the same hole to keep the wires (and LED) in place. Adding some hot glue will keep these in place and prevent smoke from escaping out this hole in the cone. Once those are installed the tubing and wires can be gently pulled through the drilled hole as the cone is pushed into place and secured using the original screw.

Tips on using the smoke machine

- Please do not continuously run the smoke machine but only in small bursts of max 40-50 seconds to allow cool down.
- After each use, we recommend ejecting any excess fog liquid that may have recondensed within the barrel of the Wasteland Industries Smoke Machine. This can be done by simply “flicking” the Wasteland Industries Smoke Machine while holding it to eject any excess liquid from the barrel.
- Although the Wasteland Industries Smoke Machine can be used in any orientation provided that the tank is mostly full, we still recommend that you keep it upright (with the nozzle pointing vertically upwards) as much as possible. This position allows the coil to optimally absorb the liquid, even if the tank is near-empty. If there isn't much fog liquid remaining in the tank, avoid using the Wasteland Industries Smoke Machine in any orientation other than upwards as this would have the same effect as running it without any liquid. If you are mounting the Wasteland Industries Smoke Machine in a static position and require smoke output in a downward direction, we would recommend using our hose attachment accessory.
- The vape tank (or clearomizer) can very easily be switched to a new one if for any reason the old tank will break.
- If, during normal use, you notice that the smoke produced starts smelling burnt, it's time to replace your clearomizer (normally after 2-3 months of heavy use). We suggest to buy a Kanger T3 Clearomizer.
- You can find the liquid in any vape shop near you, just ask for "100% glycerin" or has they call "liquid base" - it's cheap and does not include any of the bad chemicals (like nicotine) and therefore safe to use. If possible ask for 30PG/70VG ratio at any vape shop. In general the higher the VG rate the more smoke.
- This smoke machine can be very easy be built in your project. Also the use of this adapter makes this smoke machine a lot less fragile as other smoke machines currently on Etsy. Please however note this item is still somewhat fragile and its goal is to be used in prop, costume making, theater and similar stuff that requires building, therefore we do not accept returns if you break it.

Storage and maintenance

- Do not store the Wasteland Industries Smoke Machine for extended periods of time (more than a few days) with fog liquid still in the fluid tank.
- When storing for a longer period place the machine in a cool, dry place. Also it is advised before storing to unscrew the clearomizer and give it a quick rinse to remove any remaining fog liquid. To do so:

Open the clearomizer and pour out the remaining smoke fluid in the clearomizer.

Take apart the clearomizer (it's 3 pieces):

1. The plastic top tube
2. The silver Bottom ring
3. In the silver bottom ring there is a small pipe (which is the coil). You can also screw this loose from the silver ring.

Once you have all parts apart you can rinse everything with hot water and let it completely dry. Once dry re-assemble the clearomizer and store it separate from the machine.

Solving issues

Issue: Machine produces a burning smell with a NEW heating coil

There may be a very slight burning smell present in the first few second of operation with a new coil, this is normal. If the smell does disappear or gets more severe, stop using the Wasteland Industries Smoke Machine and allow it to rest for at least another 30 minutes before continuing. Ensure that the fluid tank is fully filled. In cold environments, the fog liquid becomes more viscous and will take longer to absorb into the heating coil. If this is the case, place the Wasteland Industries Smoke Machine in a warm area before using it.

Issue: Machine is running but no smoke is coming out of the machine

For the first time use or after not using the machine for a while it sometimes is needed to take a puff from the clearomizer as if you are smoking a cigarette (without inhaling the smoke) to get the smoke flowing (again). This only needs to be done if you turn on the machine and no smoke is coming out.

If this does not solve the issue most likely the clearomizer was either filled incorrect resulting in the middle tube being blocked with fluid or the clearomizer is damaged and needs to be replaced by a new one.

You can try to clean the clearomizer using following steps:

Unscrew the clearomizer from the machine and poor out the smoke fluid in the clearomizer.
Take apart the clearomizer (it's 3 pieces):

1. The plastic top tube
2. The silver Bottom ring
3. In the silver bottom ring there is a small pipe (which is the coil). You can also screw this loose from the silver ring.

Once you have all parts apart you can rinse everything with hot water and let it completely dry.
After that you can re-assemble all.

Fill the clearomizer again and let it stand for at least 15 minutes!

Issue: Powerbank is turning off after 30 seconds of not using the machine

The issue with powering off is an issue caused by the powerbank you're using. As the smoke machine runs on 3.5V some powerbanks automatically shut-off as they do not see 5v of input and think the machine is turned off.

If you connect the machine to a wall socket using your phone charger you will see it will not power off.

What you can try is if you can turn off the auto power mode off your powerbank. I found in a lot of cases it works the same:

- If there is an on/off button on your powerbank hit it once to turn it on
- Now press the button and hold it down for about 10 seconds
- With quite a few powerbanks that helps.

Give it a try with yours. If it doesn't work you need to look for a powerbank that does not have this auto off function.

Issue: USB powered machine is running for less than a second but it's not producing smoke

Most likely your powerbank is not "powerful" enough. Most of the fog machines can be powered by any USB powerbank you have at home however some of our machines only work using a powerbank with a 2A or more output (also known as quick charger). This should be on your powerbank (in small letters).

In general there are 2 numbers on the powerbank being mAh and A.

- **mAh:** provides info on the capacity of your powerbank (so how long you can use it).
- **A:** provides info on the "power". This should be 2A or higher.

Safety

To produce smoke, the Wasteland Industries Smoke Machine evaporates a mix of Propylene Glycol and Vegetable Glycerin. Although these chemicals are both generally recognized as safe and are commonly used in food additives and skin lotions, you must always follow the following safety points:

- Do not consume the fog liquid
- Do not get any fog liquid into your eyes
- Never use the Wasteland Industries Smoke Machine near children under the age of 4 or pregnant women
- Never use the Wasteland Industries Smoke Machine near people with renal health issues
- Never deliberately inhale the smoke produced
- Never operate the Wasteland Industries Smoke Machine if the liquid tank is empty
- If you feel nauseous, light-headed or exhibit any other adverse health-related side effect, immediately cease operation and go to well-ventilated room with fresh air. Call a doctor if symptoms continue. Similarly, call a doctor if you are concerned about the impact of these chemicals on your health.
- During operation, the Wasteland Industries Smoke Machine heats an internal metal coil. To prevent any heat-related issues please follow these guidelines:
 - Do not touch the clearomizer during operation as it can be hot.
 - Always allow the clearomizer to cool down before refilling liquid.
 - Never aim the Wasteland Industries Smoke Machine at people or animals that are within 1m of range as sometimes, small droplets of hot fog fluid can exit the nozzle.
 - Never look directly into the Wasteland Industries Smoke Machine's nozzle while it is running.
 - Never place the Wasteland Industries Smoke Machine near any flammable materials.
 - Always make sure there is enough ventilation space for the Wasteland Industries Smoke Machine.
 - Never change or alter any of the power options of the Wasteland Industries Smoke Machine.
 - Always use correct and in your state / country approved batteries or power banks for operating the Wasteland Industries Smoke Machine.

Finally, there are a few more miscellaneous guidelines that must be respected:

-Never allow anyone under the age of 18 to use the Wasteland Industries Smoke Machine

-Wasteland Industries will not accept any responsibility for property damage or bodily harm caused by the improper use of the Wasteland Industries Smoke Machine. It is the user's responsibility to use good judgement and knowledge of the risks detailed above to correctly and safely operate the device. If you are unwilling to accept the risks associated with the use of this device, immediately return it back to us for a full refund.

Support and FAQs

Can the Wasteland Industries Smoke Machine trigger smoke alarms?

Yes, if enough smoke is produced then ionization and photoelectric smoke alarms will be activated. Traditional heat-activated smoke alarms and sprinklers won't be affected

Is it possible to change the smoke color?

Unfortunately not. The Wasteland Industries Smoke Machine produces smoke through the evaporation of a fog liquid so it can only be white, adding a dye to the liquid will not change this. The only way to simulate colored smoke using the Wasteland Industries Smoke Machine would be to light up the white smoke using some external lights.

Can I breathe in the smoke?

During proper operation, the fog produced is considered to be non-toxic but we do not recommend breathing it in anyway. The smoke can only become toxic if the safety precautions regarding the replacement of worn-out heating coils are not followed.

What is the fog liquid made out of?

Our fog liquid consists of a high purity vegetable glycerin and propylene glycol mixture. These chemicals are commonly-available chemical and may be found in local vape shops as a base liquids for electronic cigarettes.

Can I use liquids from other smoke machines?

We can only guarantee the safety and performance of the fog liquid that we sell so if you decide to experiment with other compositions, this would be at your own risk.

What obstacles can the remote control signal go through?

It really depends on the exact situation but in general, as a rough guideline, you will be able to control the Wasteland Industries Smoke Machine through several thin plaster walls. Similarly, if you decide to put it into cardboard or fabric enclosure, you shouldn't encounter any issues. On the other hand, metal barrier such as car doors will usually block the signal although we have even had luck with activating the Wasteland Industries Smoke Machine while it was inside a car hood!

If you believe that your Wasteland Industries Smoke Machine is faulty, please check the troubleshooting section of this manual. If your problem still persists, please reach out to us at the email address below.

Any other mail functions you can send us an email: info@wasteland-industries.com

Manual Disclaimer

All the data of this User's Manual (e.g. illustrations, text, specifications and data) are based on the latest information available and every care has been taken in compilation of the contents herein and in verification of its accuracy at the time of creation. As the aim of Wasteland Industries is to give customers the most updated and state-of-the-art products, it may operate some technical modifications and improvements in time. Wasteland Industries may consequently alter the information contained in this User's Manual without notice. Wasteland Industries has taken every care to ensure that this User's Manual contains accurate information and has published it on the basis that it is not responsible for the results of any actions taken by users of information contained in it, on the basis of information contained in this manual, nor for any error in or omission from it. Wasteland Industries disclaims any responsibility whatsoever for misrepresentation by any person whatsoever of the information contained in this User's Manual and expressly disclaims all and any liability and responsibility to any person, whether a reader of this User's Manual or not, in respect of claims, losses or damage or any other matter, either direct or consequential arising out of or in relation to the use and reliance, whether wholly or partially, upon any information contained or products referred to in this User's Manual. If you find that some technical features or external appearance of your product differ from the ones inserted in this User's Manual, please contact Wasteland Industries.

Again thank you for purchasing a Wasteland Industries smoke machine and please do send us a picture of your project or tag us in your social media post!

Visit us@

www.wasteland-industries.com

www.facebook.com/wastelandindustries

www.etsy.com/shop/wastelandindustries

www.instagram.com/wastelandindustries

